

# ROBUST STEM SUPPORT / Radial Hook, 505rd

When growing cucumbers in a low greenhouse, a technique called the "Umbrella System" is used, in which the crop is grown up, over the wire and back downwards towards the ground. This technique can cause multiple issues including stem breakage and kinking, diminishing vitality of the stem top portion, and as a result reducing significantly cucumber yield and quality. Stems are tangled and the maintenance becomes time consuming and inefficient.

Radial hook ensures continuation of healthy growth without damaging the stem, and eliminates the need of moving the stem over the wire.

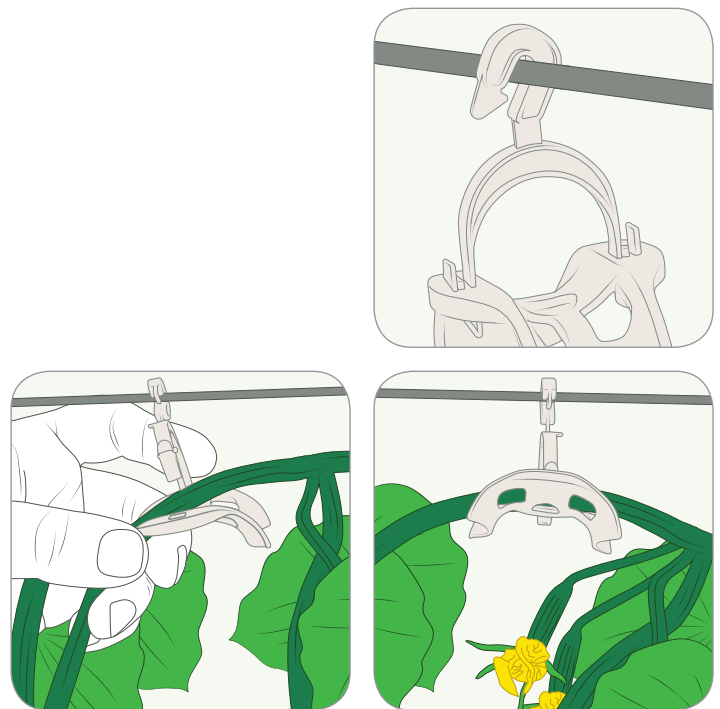
## Advantages

### Efficient labor

- Promotes grade A quality cucumbers
- Provides significant increase in yield
- Easily attached, once the plant reaches the trellising wire
- Facilitates organized rows of plants
- Easy and quick disposal at the end of the season
- One Radial Hook costs less than a single cucumber
- Attaches to existing trellising wire
- Multi-seasonal

### Crop protection

- Supports the stem with special inner curve structure
- Prevents the stem from bending and breaking
- Control the plants growth while preventing ventilation blockage
- Special design to prevent accidental slipping off the wire



## Instruction of use

- Hang Radial Hook on the trellising wire above each plant
- Place the stem inside the hook
- Close the hook